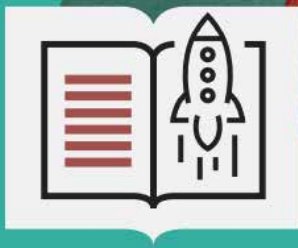


FORSINA

Forsina Anatomy VR

Quick Manual



About Forsina

“FORSINA” **the biggest medical library in the world**, aims to assist universities, students, healthcare professionals, and even patients in receive quality and accurate medical information, and it provides different tools to easily view, study, and understand human anatomy for male and female using 3D, Virtual Reality, and real CT scan models.

We have the biggest medically accurate content written developed by our anatomy experts and doctors, offering more than 1000 histology images, 50000 landmarks, 20000 traceable blood vessel and nerve paths, 500000 CT images and over 5 million medical words.

Forsina Products

Forsina has created software that mainly focus on the anatomy of the human body and histology in addition to radiology and Dicom convertor for the purpose of learning and harnessing the best tools to facilitate and empower the learning and researching process

Our Products



Forsina Anatomy 3D

Explore the female and male human body comprehensive structure in a stunning 3D environment covering every anatomical structure with full medical information for each one

Forsina Anatomy VR

Explore the female and male human body comprehensive structure in an immersive Virtual reality environment covering every anatomical structure with full medical information for each one



Forsina Dicom Converter 3D

Convert your DICOM files into a 3D module to be used in your desktop or mobile, this will allow you to explore your DICOM images in 3D environment

Forsina Dicom Converter VR

Convert your DICOM files into a Virtual Reality module to be used using your VR tool kit, this will allow you to explore your DICOM images in one of a kind experience you have never had before



Forsina Radiology 3D

Learn and understand how to read CT medical images, control the body density and frontal planes (axial, Sagittal, coronal) in a stunning 3D module created from over 120000 CT images for your studies

Forsina Radiology VR

Learn and understand how to read CT medical images, control the body density and frontal planes (axial, Sagittal, coronal) in an immersive VR module created from over 1 Million CT images for your studies

Quick Guide

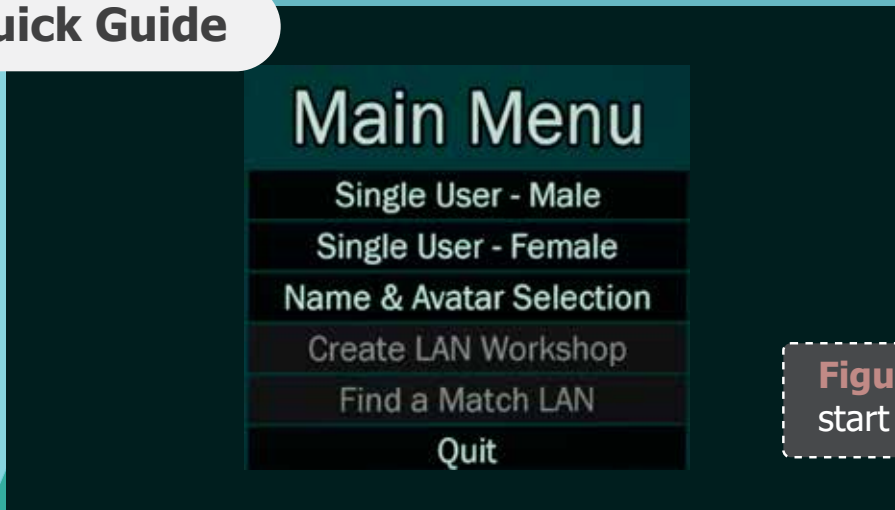


Figure 1
start screen

| Button | Function |
|-------------------------|--|
| Single User - Male | Launch the application with male 3D model in VR environment as single user |
| Single User - Female | Launch the application with female 3D model in VR environment as single user |
| Name & Avatar Selection | Customize your name and avatar by: <ul style="list-style-type: none"> * Enter your name in the text * Change your avatar color to be identified when entering LAN workshop |



! For the best software performance always choose the right VIVE version

| Button | Function |
|---------------------|---|
| Create LAN Workshop | <p>Create a session to get other users involved.</p> <p><u>After choosing this option, insert the following:</u></p> <ul style="list-style-type: none"> ▶ Name of the session in the text field ▶ Number of users to determine how many users can join the session ▶ Select 3D body gender (Male or Female) ▶ Select accept by pointing at it with the laser using controller 1 and pressing A (trigger) to launch the application and start the session |
| Find a Match LAN | Joining a session |
| Quit | Close the application |



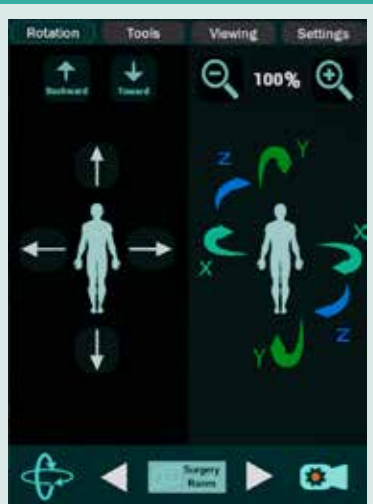
Figure 2
cube navigation



| Button | Function |
|---------------|---|
| Main Menu | Bring the user back to the main menu (Figure 1 Start Screen) |
| Options | Display a set of options to set graphic details & resolution |
| Tutorials | Access video tutorials that fully explain how to use Forsina 3D Anatomy (Not available) |
| Web Browse | Surf the internet within the application |
| Leave Forsina | Exit Forsina Anatomy VR |

| Icon | Name | Function |
|------|--------------|---|
| | Scale down | Reduce the size of the cube by 10% for each click |
| | Undo | Revert last action |
| | Reset All | Reset single part/group/multiple to its original location |
| | Clear Labels | Remove all body part labels |
| | Redo | Reapply last action (only activated after Undo function) |
| | Scale up | Used to enlarge the cube by 10% for each click |

! Undo function will revert the last action as it was taken (if you select a group it will revert all the group back)



| | |
|------------------------------------|-------------------------------------|
| | |
| Move body into the front (Z axis) | Move the body to back (Z axis) |
| | |
| Move the body up (Y axis) | Move the body down (Y axis) |
| | |
| Move the body to the left (X axis) | Move the body to the right (X axis) |
| | |
| Zoom in to the body | Zoom out of the body |

| Num. | Icon | Name | Function |
|------|------|-------------------|--|
| 1 | | Transform Panel | By using the tools and buttons on this Panel you can move the body in the 3D scene |
| 2 | | Show Visual Gizmo | Showing visual (X,Y,Z) axes arrows on the body |
| 3 | | Surgery room | The default VR room where application starts |
| 4 | | Real View | Allow you to see the human body in the actual room you are in |

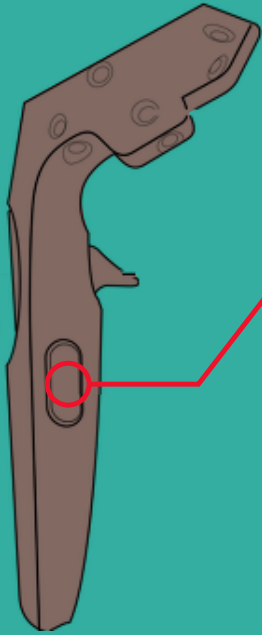
! Note that you can control the body by clicking at any arrow in gizmo
 ! Pressing on the body image icon the camera will return to the default pose

! Switch off the surgery room by clicking on it, you can change the background color using ◀▶

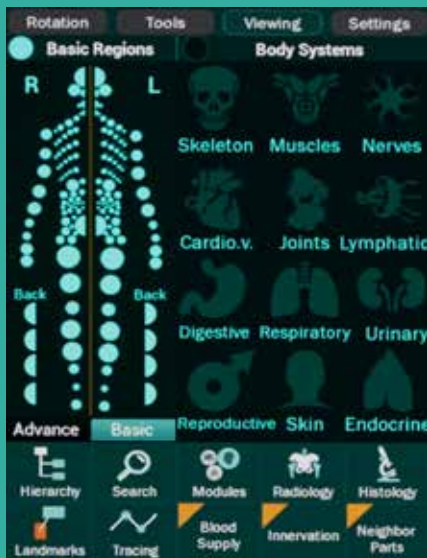
! This will turn on the VR headset camera, so modules might not have this feature



| Num. | Icon | Name | Function | |
|------|------|-------------|--|---|
| 1 | | Select | Select a part to control it | |
| | | Hide | Make the selected part/group invisible | |
| | | Fade | Make the selected part transparent and see underneath layer | |
| | | Fade Others | Make the unselected part transparent and see underneath layer | |
| | | Explode | Expand the selected part to its primary segments | |
| | | Information | Used to hide/show the information panel for the selected part | |
| | | Part label | Select a body part/group with an indication of it by showing label | |
| | | Isolate | Isolate the selected part/group from the whole body in VR view | |
| | | Stop Heart | Play/stop the motion of the Heart | |
| | | Reset | Reset selected part/group to its original position by clicking on it | |
| | | Freeze | Make the selected part unaffected by all functions | |
| | | Duplicate | Make another copy of the selected part / view | |
| | 2 | | Drawing | Used to draw on a separate board or directly on the model |
| | | | Sticker | Allows to create a sticker for any part he desires |



| Num. | Icon | Name | Function |
|------|--|--------------------|---|
| 2.1 | | Screenshot | Takes a screenshot for your current view |
| | ! (Use Grip button on the controller as a quick snapshot shortcut) | | |
| | | Music | Play/stop background music |
| 3 | | Eye Tracker | Displays a black dot that represents the spot where the user is looking |
| | | Reset hide | Undo the hiding action |
| | | Reset isolate | Reset all isolated parts to its original |
| | | Reset fade | Undo the fade action |
| | | Reset Explode | Undo the explode action |
| 4 | | Disable Freeze | Disable freeze function on the selected part |
| | | Single selection | Allows select/Hide/fade/isolate a single part of the human body |
| | | Group selection | Allows select/Hide/fade/isolate a group of the human body |
| 5 | | Multiple selection | Allows select/Hide/fade/isolate a multi parts of the human body |
| | | Syllabus | Manage/edit your syllabus (comming soon) |




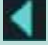
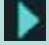






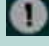



| Num. | Icon | Name | Function |
|------|----------------|------------------------|---|
| 1 | | Regions component | A small sample of a dotted human body is displayed in order to turn on/off the dots to show/hide the human body regions in VR |
| | Advance | | Open advanced region to activate advance body structure view in more deatils, for example (show all nerve system, blood vessels) |
| 2 | | Body Systems component | Enables you to hide/show the human body systems in VR (Skeletal system, Muscular system, Cardiovascular system, Nervous system, Lymphatic system, Joints system, Endocrine system, Digestive system, Urinary system, Respiratory system, Reproductive system, Integumentary system) |
| 3 | | Hierarchy | Display the Hierarchy panel that allows the user to discover the systems and their parts and groups in a hierarchical list |
| | | | Allows to expand the hierarchial list |
| | | | Show/hide the part in VR |





| Num. | Icon | Name | Function |
|------|------|------------------------|---|
| 4 | | Search | Search button is used to search for a specific part or group or landmark Filter search results (by Part/Group or System) |
| 5 | | Modules | Display the Modules panel which shows all available modules |
| | | Create Module | ability to edit/create new module to be customized |
| | | Forsina Modules | View pre-created modules from Forsina |
| | | Users Modules | View Modules created and customized by the user |
| | | | Take a snapshot of the current view and save it as a module |
| | | | Delete the created module |
| 6 | | Radiology | View CT/MRI/X-ray images for the selected part |
| | | Close | Close the current window |
| | | Scale up | Increase the size of the window by %10 |
| | | Scale down | Decrease the size of the window by %10 |
| | | Pin | Pin down the current view on the wall |
| | | CT | Browse CT images for the selected part |
| | | MRI | Browse MRI images for the selected part |
| | | XRAY | Browse X-Ray images for the selected part |
| | | Axial plane | Use to view the image in Axial plane |
| | | Coronal plane | Use to view the image in Coronal plane |
| | | Sagittal plane | Use to view the image in Sagittal plane |
| | | Medical image landmark | Red dot shows the selected point as a landmark on the CT/MRI/Xray image |
| | | Navigation arrows | Use the to move between slices |

! Landmark on medical images will remain visible in a dynamic manner as you move across all the slides that show the organ or structure

| Num. | Icon | Name | Function |
|------|---|-------------|--|
| 7 |  | Histology | <p>Browse histology images, related to the cell and tissues structure with their landmarks</p> <p>use   to browse between histology images and find image description for each image</p> <p>icon shows more information about image description, tissue category and tissues</p> <p>Clicking on the image will maximize the view</p> |
| 8 |  | Landmarks | <p>Click  to show/hide landmark number to see all landmarks on the part</p> <p>Click  for detailed information</p> |
| 9 |  | Tracing | <p>Allows to follow up the path of a blood vessel or nerve impulses on the VR module to trace the path from its origin to the related part.</p> <p>Click  to isolate the selected path</p> <p>Click  to fade other paths</p> <p>Click  for detailed information of the path</p> |
| 10 |    | New Plugins | coming soon |

